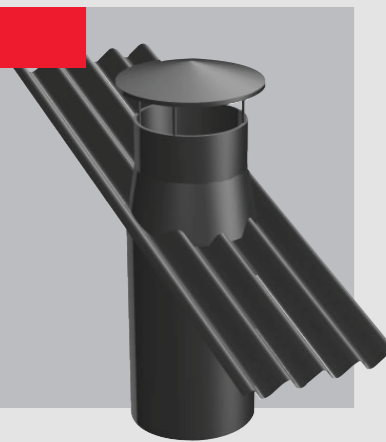


Ventilation chimneys

Ventilation chimney



Ventilation chimney

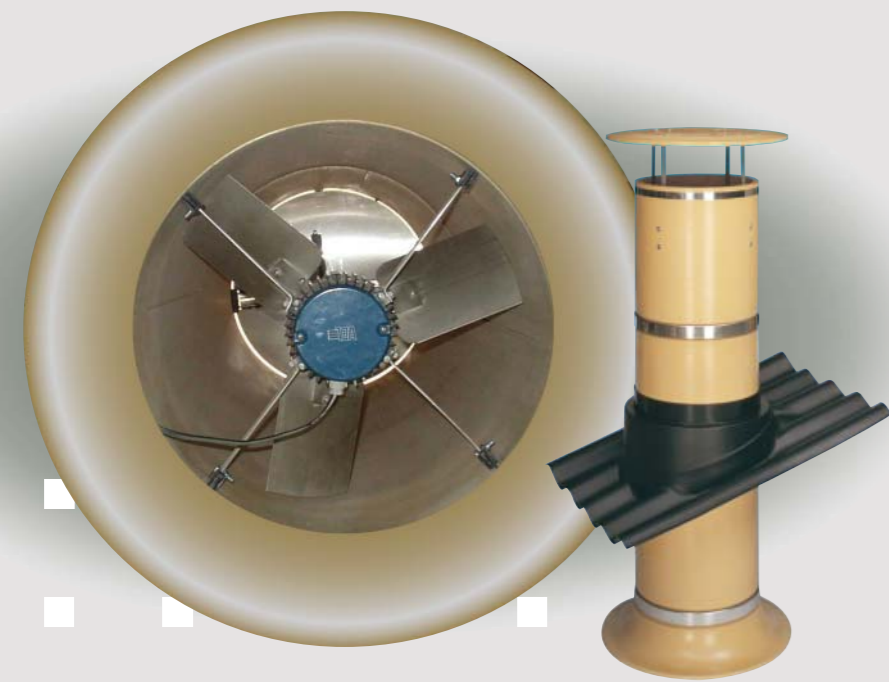
- Polyethylene
- Resistant to UV radiation, acids and abbreasive gases
- Shape- and impact-resistance from -30 to +60° Celsius
- Available in more diameters
- Cylinder-, cap- or venturi chimneys available
- Modular system
- Easy installation of fans
- Roofplates in accordance with roof corrugation
- Optionally available insulated

Airmix unit



Airmix unit

- Polyurethane
- Uniform mixture of fresh- and inside air
- Optimal control air mixing
- Energy saving
- Excellent in combination with, or alternative for side wall inlets



Fan model "build in"

Technical specifications Econofans

| Type    | Dimensions<br>L x H x D | Quantity<br>of blades | Material<br>of blades | Power<br>(kW) | Voltage<br>(V)   | Capacity at 10 Pa<br>(m³/h) | Capacity at 30 Pa<br>(m³/h) |
|---------|-------------------------|-----------------------|-----------------------|---------------|------------------|-----------------------------|-----------------------------|
| VDL-10  | 800x800x330 (A)         | 6                     | SS                    | 0,37          | 230/400V         | 12000                       | 9000                        |
| VDL-20  | 960x960x330 (A)         | 6                     | SS                    | 0,37          | 230/400V of 230V | 14500                       | 13000                       |
| VDL-30  | 1150x1150x330 (A)       | 6                     | SS                    | 0,55          | 230/400V         | 21500                       | 18900                       |
| VDL-40  | 1380x1380x330 (A)       | 6                     | SS                    | 1,10          | 230/400V         | 36500                       | 33500                       |
| VDL-40  | 1380x1380x330 (A)       | 3                     | SS                    | 1,10          | 230/400V         | 42000                       | 38500                       |
| VDL-130 | 1380x1380x370 (B)       | 5                     | Synthetic             | 1,65          | 230/400V         | 37500                       | 34500                       |
| VDL-130 | 1380x1380x370 (B)       | 3                     | Synthetic             | 1,65          | 230/400V         | 43000                       | 39000                       |

A = Depth including shutter is + 75mm  
B = Depth including shutter is + 85mm

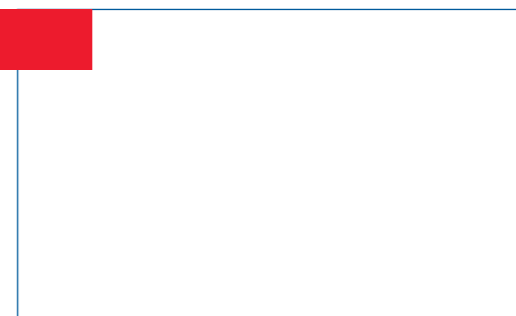
Technical specifications Air inlet valves

| Type     | Mounting dimensions<br>(L x H x D) | Outside dimensions<br>(LxH) | Cap. at 10 Pa<br>(m³/h) | Cap. at 20 Pa<br>(m³/h) | Cap. at 40 Pa<br>(m³/h) |
|----------|------------------------------------|-----------------------------|-------------------------|-------------------------|-------------------------|
| 145-VFG  | 650x270x95 mm                      | 730x350 mm                  | 1450                    | 2050                    | 2900                    |
| 3000-VFG | 857x373x118 mm                     | 937x453 mm                  | 2900                    | 4100                    | 5800                    |
| 135-VFR  | 650x270x115 mm                     | 710x330 mm                  | 1450                    | 2050                    | 2900                    |
| 4000-VFG | 700x550x145 mm                     | 780x630 mm                  | 3900                    | 5500                    | 7800                    |

Technical specifications Nozzle spray system (Optimist)

| Capacity    | Quantity of nozzles | Pressure |
|-------------|---------------------|----------|
| 11 ltr/min. | 30 - 94             | 40 bar   |
| 21 ltr/min. | 39 - 197            | 40 bar   |
| 42 ltr/min. | 47 - 356            | 40 bar   |

Dealer



**VDL Agrotech**

P.O. Box 8822, 5605 LV Eindhoven, T: +31(0)40 29 25 500  
www.vdlagrotech.nl, info@vdlagrotech.nl, F:+31 (0)40 29 25 501

V2009801



- VDL Agrotech supplies complete made to size ventilation- and cooling systems
- Durable
- Energy saving
- Maintenance friendly

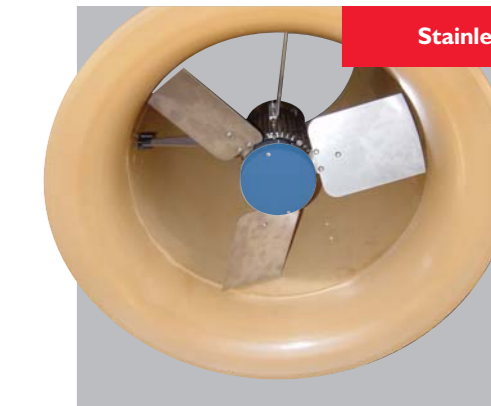
**VDL Agrotech**



Axial fans

Chimney fans, stainless steel blades

- Stable mounting with special supports
- Optional speed controllable
- Low noise level
- Mounting diameters 35- to 92 cm
- Available in single- and three phase



Stainless steel blades

Chimney fans, synthetic blades

- Stable mounting with special supports
- Optional speed controllable
- Low noise level
- Mounting diameters 30- to 92 cm
- Available in single- and three phase



Synthetic blades

Wall mounted fan

- Propeller diameter from 30- to 92 cm
- Synthetic blades and casing
- Optional speed controllable
- Low noise level
- Available in single- and three phase



Wall mounted fan



# The ventilation system that breaths quality

## Fans

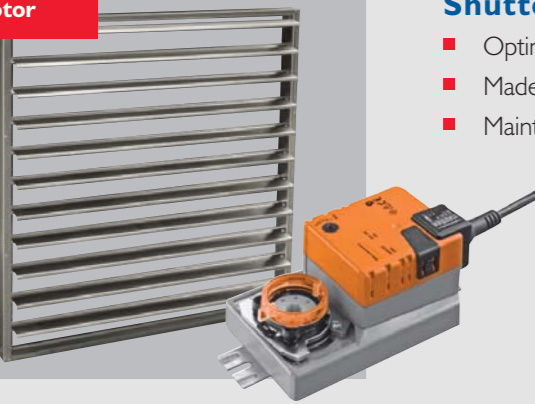
Econofans VDL-20 and VDL-40



### VDL-10/ -20/ -30 and -40 serie

- Stainless steel fan blades
- Centrifugal opening mechanism with counterweights
- Synthetic venturi
- Lighttrap optional available

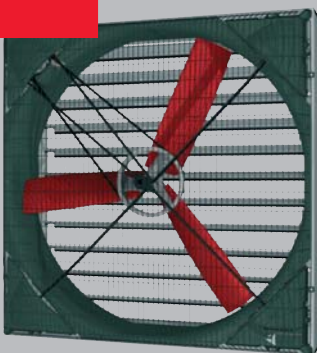
Shutter with servo motor



### Shutter with Servo-motor

- Optimal airflow capacity
- Made of galvanised steel sheet
- Maintenance friendly

Econofan VDL-130



### VDL-130

- Aërodynamical design
- Three dimensional blades for increased air speed
- Low noise level
- Reduced air resistance due to unique strips on top of blades
- Also available with 5 blades for higher pressure (>60 Pa)
- Suitable for use with lighttraps

## Winches

### RS 455/ RS 850

- One shaft for winchdrum (one- or two shafts RS 850)
- Maximum winding capacity 455 kg. (RS455) / or 850 kg. (RS 850)
- Available in one- or three phase motor
- Endswitches incorporated
- Feedback with 5 kOhm potentiometer



RS 850 with 2 winchdrums

GW20 with one winchdrum

### GW20

- One shaft for single- or double winchdrum
- Maximum winding capacity 400 kg.
- Available in one- or three phase motor
- Endswitches incorporated
- Feedback with 5- or 10 kOhm potentiometer

## Climate controllers

VDL Agrotech offers a wide range of climate controllers to cover each specific application. More information can be found in our brochure "VDL Agrotech helps you to stay in control"

### Model range climate controllers

- Climat Junior
- MCS3030
- Navigator
- Orion
- Sirius CL
- TD212



## Cooling

The VDL cooling systems provide an optimal temperature and humidity in the building, related to outside temperature and humidity

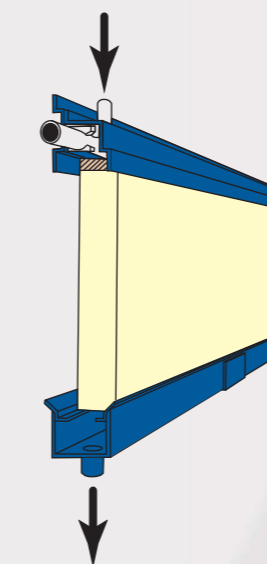
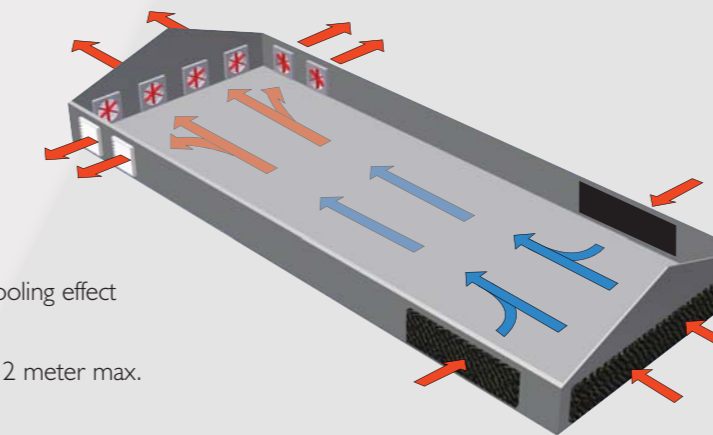
### Optimist

- Simple and efficient nozzle cooling system
- High pressure pump includes filter unit
- Flexible system made to size on location
- Centrally controlled
- Working pressure 40 bar, brass nozzle, mounted on high pressure PE hose
- Working pressure 70 bar (optional), stainless steel nozzle, mounted on stainless steel tube



### Opticool

- Pads are made of corrugated cellulose paper treated with chemicals to prevent rotting
- The unique design and high absorption capacity gives optimal cooling effect
- Distribution pad for optimal water distribution
- Pads available in 10- and 15 cm thickness, heights variable upto 2 meter max.
- Pads optional available with light filtration
- Gutters made of corrosion free sheet metal with plastic coating, aluminium or PVC material



Cooling system with corridor and water distribution system

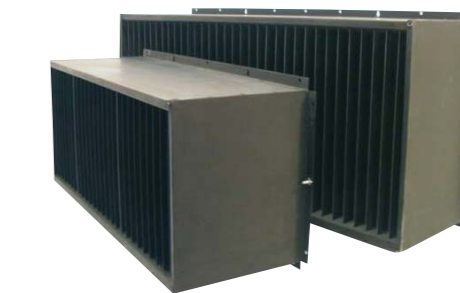
## Air inlet valves

### Air inlet valves

- Made of high quality polyurethane
- Flanged models, with flange on front side
- I45-VFG, standard model for almost all applications
- 3000-VFG and 4000-VFG for bigger air flow capacities
- I35-VFR with bottom hinge and straight flap, suitable for pig houses or tunnel inlet systems in poultry houses

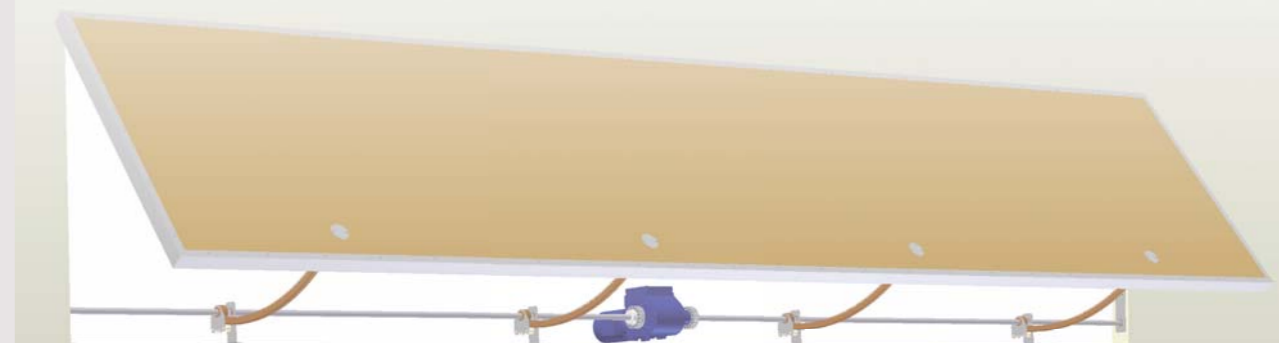
### Light traps

- Optimal light filtration
- Limited capacity loss
- Various sizes available
- Simple installation
- Suitable for inlet valves and fans
- High quality materials



### Tunnel inlet system

- Tooth rack system centrally controlled
- Stepless control
- High insulation value (sandwich panels)
- Durable
- Draught free due to weatherstrips



Tunnel inlet system

Type I45-VFG



Type 3000-VFG



Type I35-VFR

